

APPLICATIONS

Coolant Preheater designed for large Gas- and Diesel Engines for Marine-, Power-, Construction- and Mining Applications

DIMENSIONS AND WEIGHT

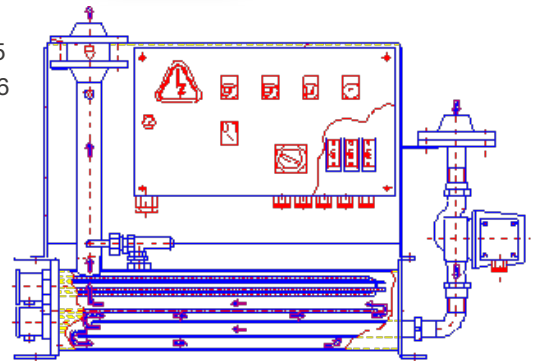
Heights	mm	660 - 1050
Length	mm	970 - 1600
Depth	mm	230 - 500
Weight	kg	70 - 210



Complete Engine Pre-heater with Pump, Flow heater and all required controls.

PRODUCT SPECIFICATIONS

- › Medium: Coolant (50% Glycol / 50% Water)
- › Heating Power: Up to 270 kW (More Power available on request)
- › Voltage Range: 1 or 3 Phase 120 V - 690 V, 50 Hz or 60 Hz
- › Housing Material: Steel
- › Thermostat: adjustable: 10-120°C
- › Safety High Limiter: adjustable 0-150°C
- › Ingress Protection: Motor: IP 54/55 for element and enclosure: To IP 66
- › Fluid Capacity: 3.5 l
- › Pump Power: 0.15 - 1.5 kW
- › Pump Flow: 4-20 m³/h
- › Pump Head: up to 25 m
- › Operating Pressure: 6.0 bar
- › Connections: DIN/ANSI/NPT/BSP Threaded or Flanged



INSTALLATION SIZE	PE11-PE11	PE20-PE21	PE30-PE32	PE40-PE50	PE60
Heating Power in KW	2 - 36	30 - 72	54 - 144	117 - 216	> 216
Pump Flow in m³/h	4 - 6	4 - 12	6 - 12	15 - 30	20 -

TECHNICAL BENEFITS

- ✓ Low and optimized surface watt density (longer heating element life, no damage to the medium and system)
- ✓ Welded construction with optional Welding Certificate. Less fittings and material pairing. No hose connections
- ✓ Temperature control in direction of the flow of the medium. Temperature sensors inside the medium, near heating element.
- ✓ Intelligent flow direction. Heat-up path away from element enclosure.
- ✓ Higher Ingress Protection (Motor IP 54/55, for Element/ Enclosure to IP 65)
- ✓ System designed for order specific standards such as: VDE, ATEX, CSA, UL, GL, ABS etc.
- ✓ CE Marking
- ✓ Relay for automatic operation
- ✓ Auxiliary contacts for remote monitoring
- ✓ Emergency Stop