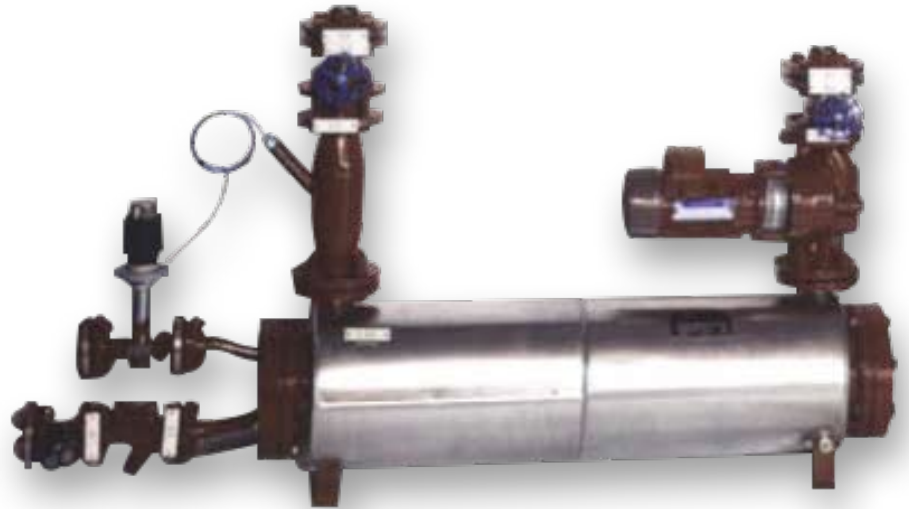


APPLICATIONS

Coolant Preheater designed for large Gas- and Diesel Engines for Marine-, Power-, Construction- and Mining Applications

DIMENSIONS AND WEIGHT

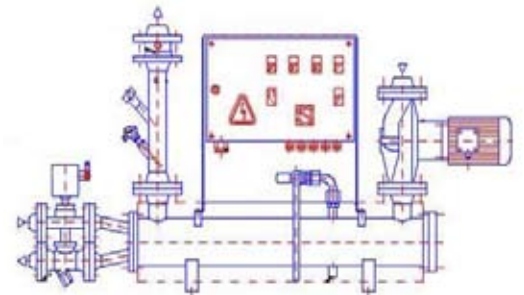
Heights	mm	730 - 850
Lenght	mm	1350 - 1800
Depth	mm	230 - 300
Weight	kg	85 - 255



Complete Engine Pre-heater with Pump, Flow heater and all required controls.

PRODUCT SPECIFICATIONS

- › Medium: Coolant (50% glycol / 50% water)
- › Heating Power: Up to 300 KW (More Power available on request)
- › Voltage Range: 1 or 3 Phase 120 V - 690 V, 50 Hz or 60 Hz
- › Housing Material: Steel
- › Thermostat: adjustable 10-120°C
- › Safety High Limiter: adjustable: 0-150°C
- › Ingress Protection: Motor: IP 54/55 for the element an enclosure: to IP 66
- › Fluid Capacity: 12-36 l
- › Pump Power: 0.15-1.5 KW
- › Pump Flow: 4-30 m³/h
- › Pump Head: up to 25 m
- › Operating Pressure: 10.0 bar
- › Connections: DIN/ANSI/NPT/BSP Threaded or Flanged



INSTALLATION SIZE

	7380/7390	7381/7391	7382/7392	7383/7393	7384/7394
Heating Power in KW	1 - 15	15 - 35	35 - 70	70 - 150	150 - 300
Pump Flow in m³/h	4 - 6	4 - 12	6 - 12	15 - 20	20 - 30

TECHNICAL BENEFITS

- ✓ Low and optimized surface watt density (longer heating element life, no damage to the medium and system)
- ✓ Welded construction with optional Welding Certificate. Less fittings and material pairing. No hose connections
- ✓ Temperature control in direction of the flow of the medium. Temperature sensors inside the medium, near heating element.
- ✓ Intelligent flow direction. Heat-up path away from element enclosure.
- ✓ Higher Ingress Protection (Motor IP 54/55, for Element/ Enclosure to IP 65)
- ✓ System designed for order specific standards such as: VDE, ATEX, CSA, UL, GL, ABS etc.